



## STANDARD ACCESSORIES

- Automatic closing
- Automatic stabilization
- Quick release of the basket
- Lifting Hook Support 230kg
- SSW: LED safety lights
- LED travel light
- Booms realized in profiles advanced high tensile steel
- Jib lifting during travel
- Cataphoresis treatment
- Hydraulically extendable tracks
- White non-marking tracks
- Lifting hook on stabilisers
- Extra-large outrigger plates
- Pre-installation for Raptor Stab. Optional
- Socage Connect
- Integrated charger + extra battery for radio control
- Multifunction hydraulic distributor
- Manual hand pump
- 230V electric socket in the basket
- Multifunction radio control
- Auxiliary electric pump 230V-50Hz
- 10kW 48V Lithium battery pack
- Trailer transport + Raptor Trailer optional

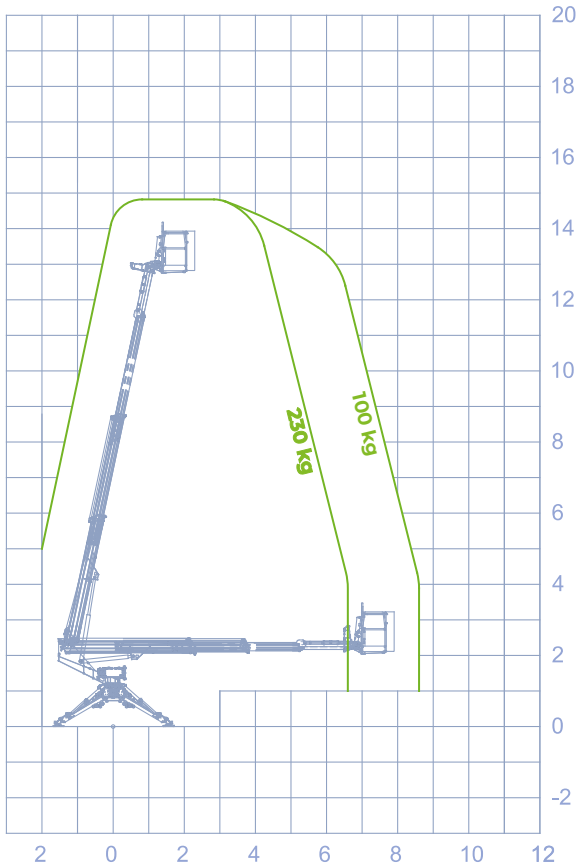
**SERIES ELECTRIC**  **LITHIUM BATTERY PACK**  **(240Ah)**  
**100% ELECTRIC WITH SUPERIOR RANGE**








## WORKING DIAGRAM

## INFO

## SIZE



-  **OUTRIGGERS**  
Z+Z
-  **WORKING HEIGHT**  
14,90 m
-  **BASKET HEIGHT**  
12,90 m
-  **MAX OUTREACH**  
10,70 m
-  **BASKET LOAD CAPACITY**  
230 kg
-  **BASKET SIZE**  
1400 X 700 X 1100 mm
-  **CONTROLS**  
Electro-Hydraulic
-  **TURRET ROTATION**  
190°+190°
-  **GVW**  
2,0 ton
-  **SIZE**  
3150 x 3000 mm
-  **BASKET ROTATION**  
60° + 60°
-  **LIFTING HOOK**  
230 kg

